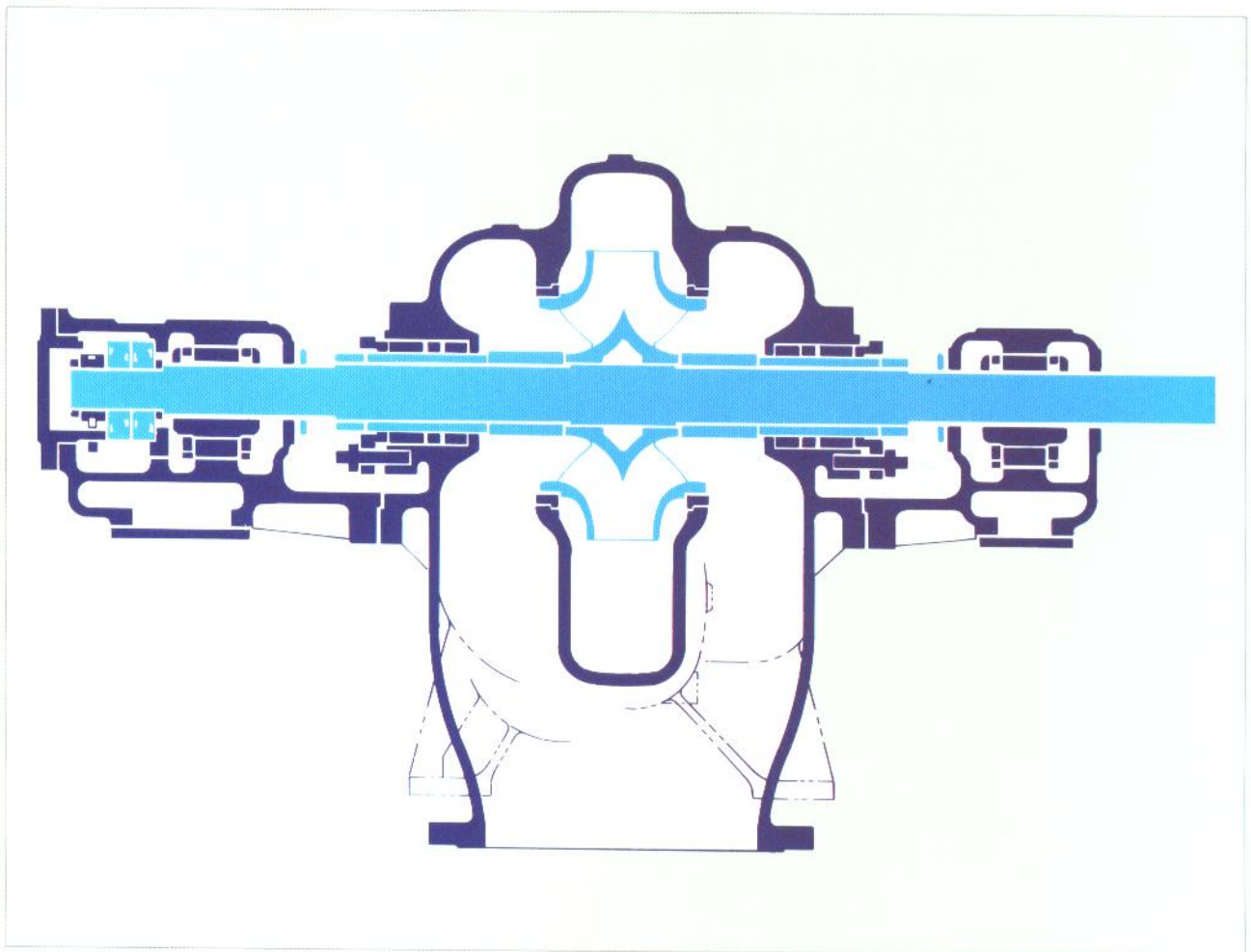


CDM

Double Suction Pumps

Bore size : 24 to 56 in (600 to 1400mm)



 TORISHIMA PUMP

Design

(Standard nozzle suction are axially split v discharge pipe

Applications

Power Plant/Cooling water, etc.

Sea Water

Desalination Plant/Cooling water, Brine blow down, etc.

Water Works/Water intake, Boosting, Distribution.

Pipe Line/Boosting, etc.

Handled Liquids

Fresh water
Industrial water
River water
Sea water
Crude oil
etc.

Application Range

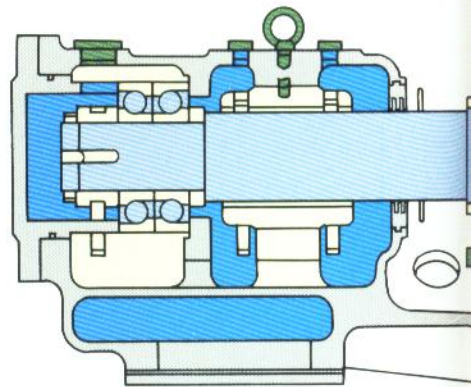
Total head/up to 680ft(210m)
Capacity/up to 145,000 U.S.gpm (33,000m³/h)
Liquid Temperature/up to 176°F (80°C)
(Over 176°F<80°C> also available)
Sizes/24 to 56in(600 to 1400mm)

For larger application range, another line-up of double suction pumps is available.

Impeller (Three-dimensional closed impeller)

Standard material: Bronze

Phosphor bronze, Stainless steel, Aluminium bronze, Cast iron, Spheroidal graphite cast iron are also available.



Volute casing

Flanges: ANSI

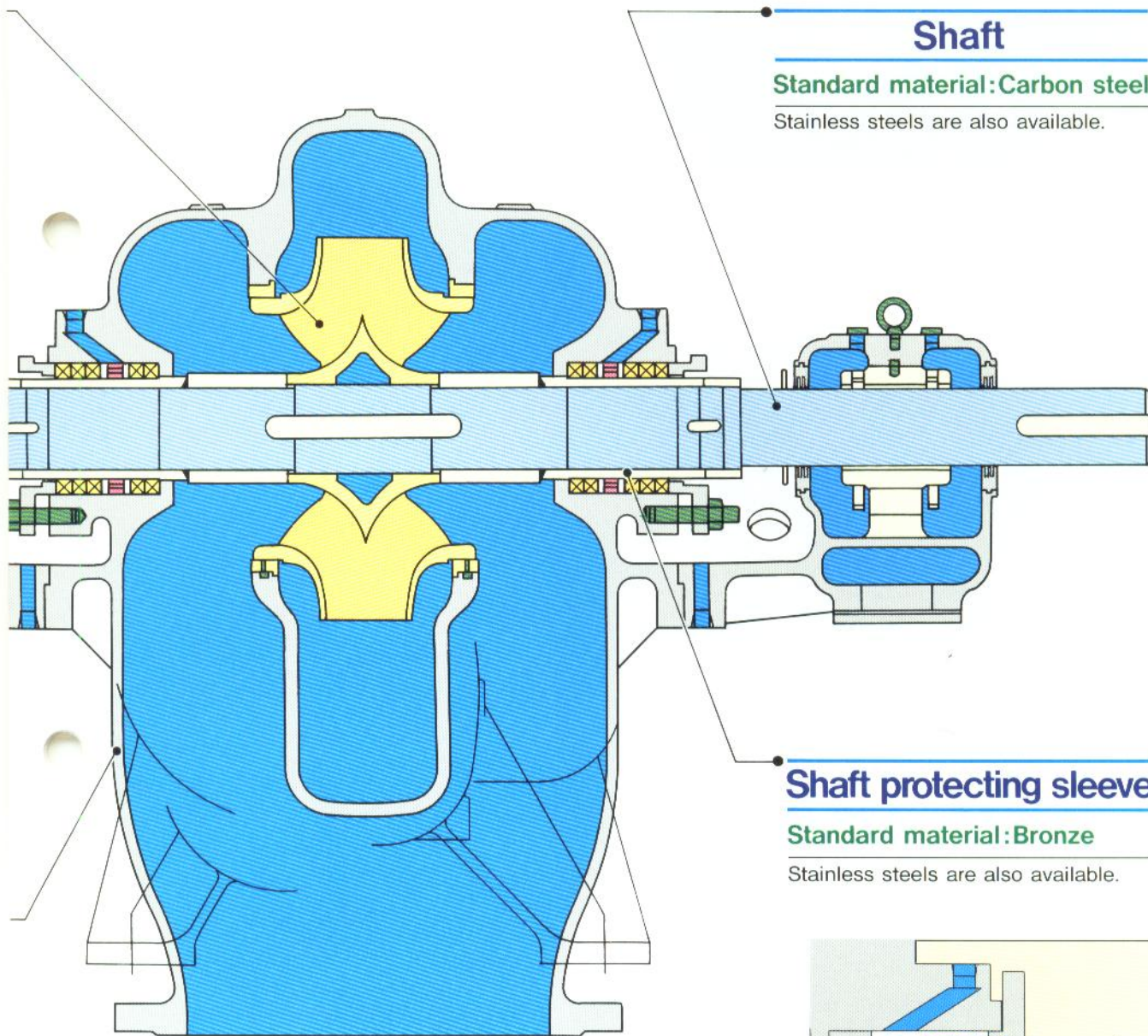
BS, ISO, JIS are also available

Standard material: Cast iron

Ni-resist, Spheroidal graphite cast iron, Stainless steel, Aluminium bronze are also available.

le orientation is side-side, but other executions such as bottom
so available if required.

lute casing can be opened without dismantling the suction and
s.



Shaft

Standard material: Carbon steel

Stainless steels are also available.

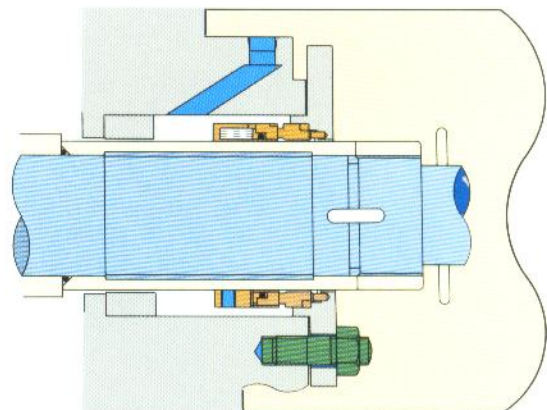
Shaft protecting sleeve

Standard material: Bronze

Stainless steels are also available.

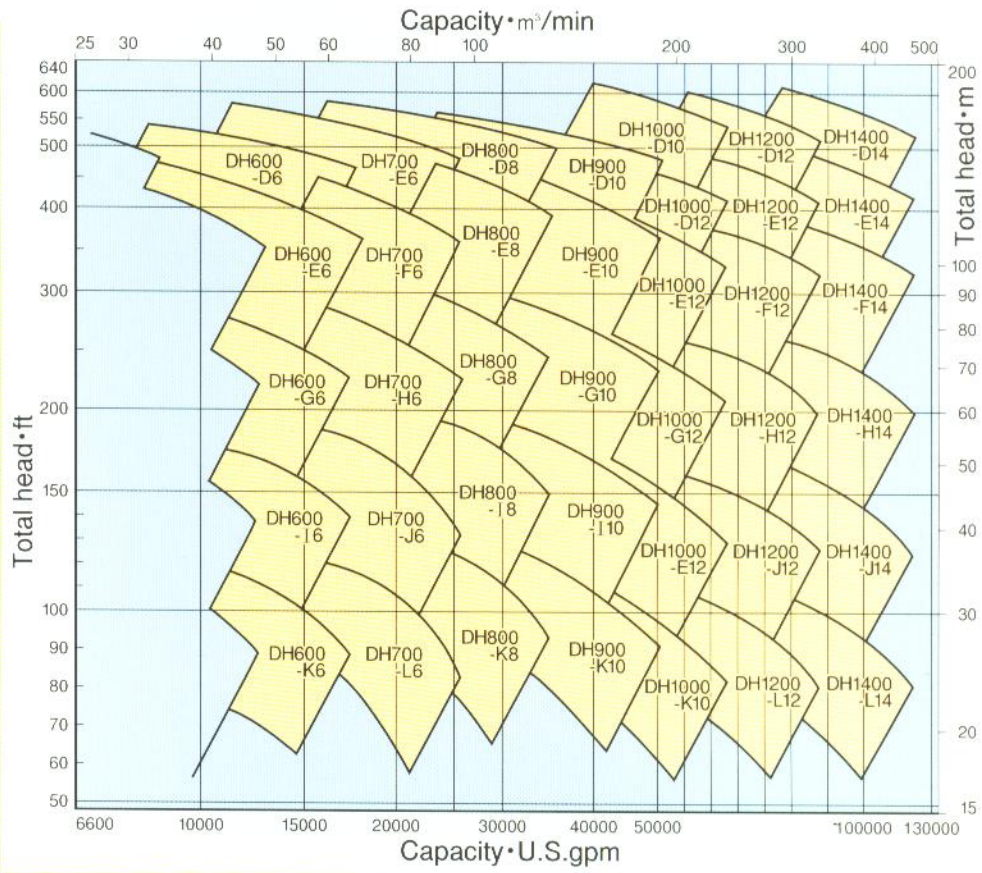
Mechanical Seal

The mechanical seal as shaft sealing saves resources and energy by preventing the pumped liquid from leaking and smooth pump rotating

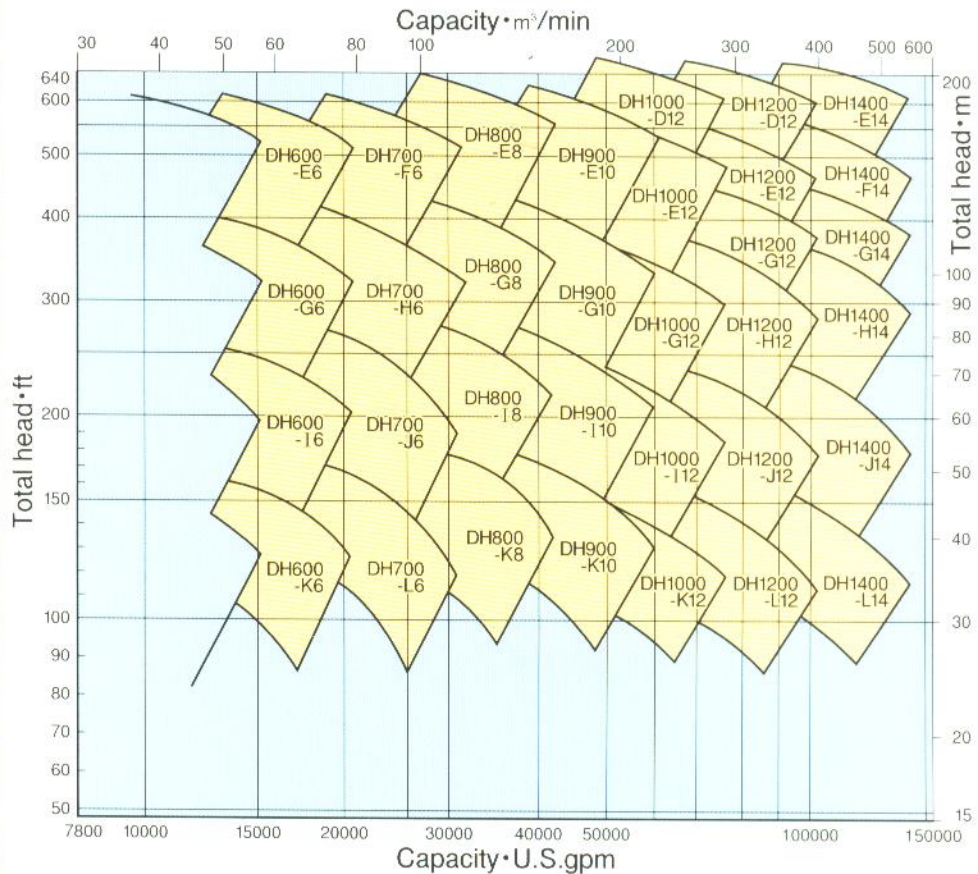


Selection Charts

50Hz



60Hz

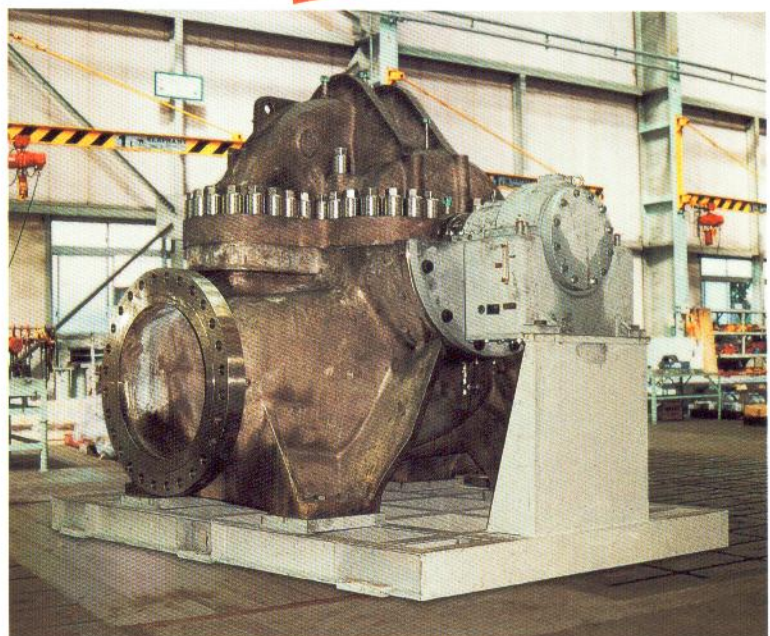
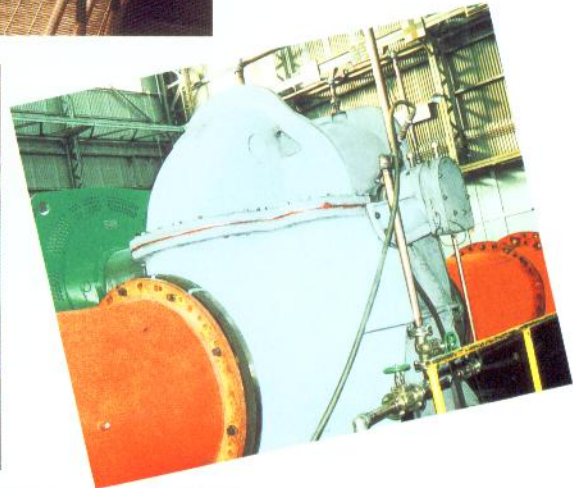
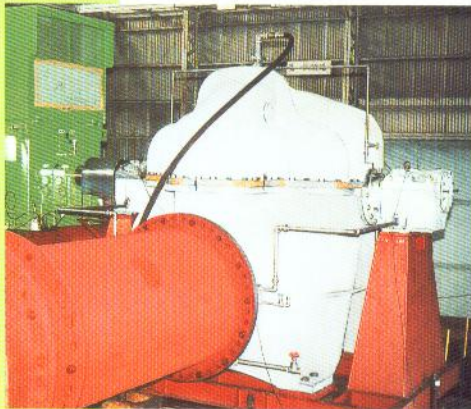


Applications



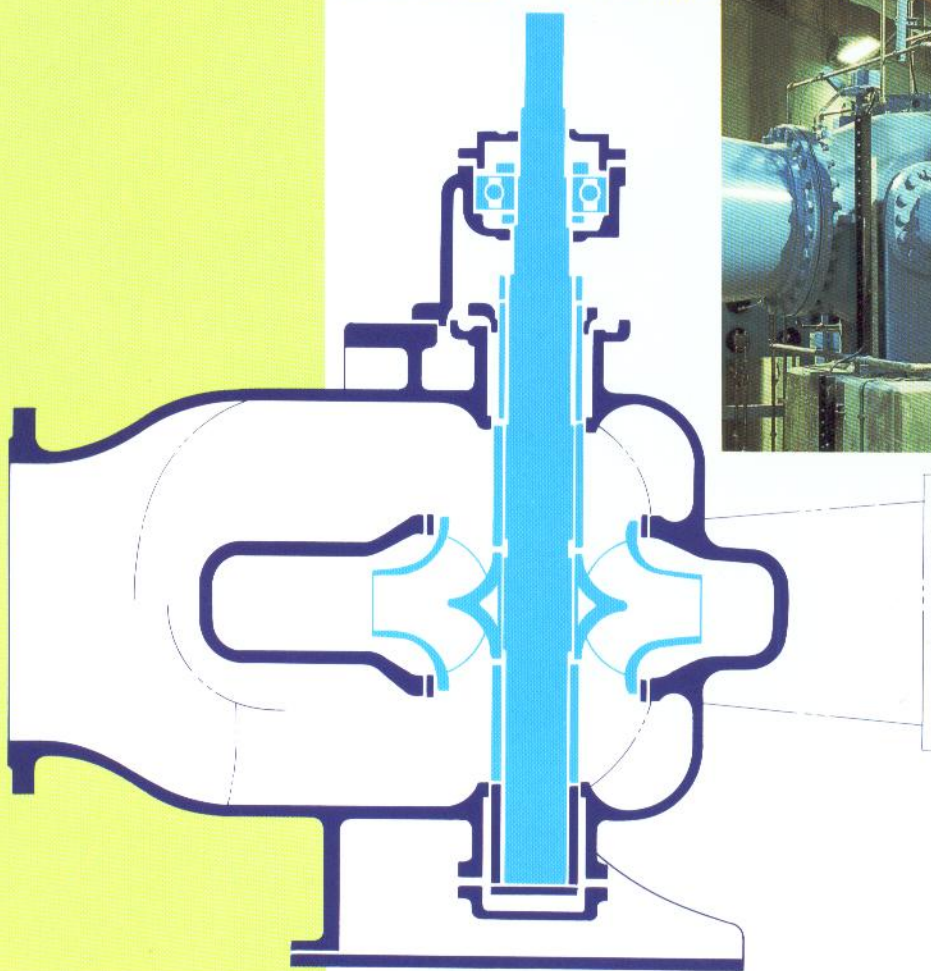
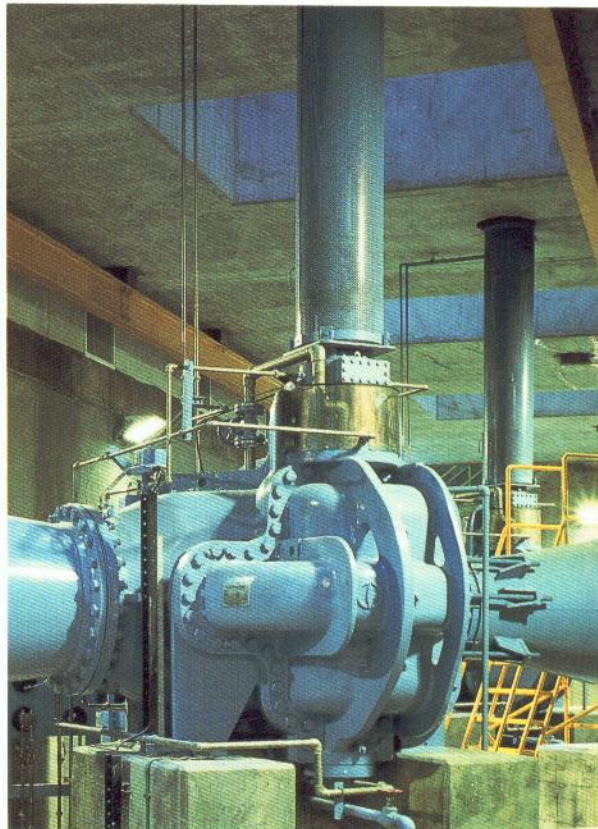
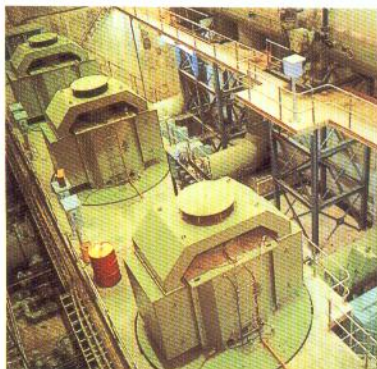
	1	
2		3
4		5

- 1 Booster pumps in water works plant, Thailand.
Size:54in(1350mm),Driver:2100kW.
- 2 Circulating pump for a combined cycle power plant, Thailand.
Size:48in(1200mm),Driver:1250kW.
- 3 Cooling water recycle pump in sea water desalination plant, Abu Dhabi.
Size:40in(1000mm), Driver:750kW.
- 4 Water supplying pumps in water works plant, Japan.
Size:36in(900mm),Driver:1500kW.
- 5 Potable water transmission pump with high total head 250m for Abu Dhabi.
Size:32in(800mm),Driver:4700kW.



Vertical Version

CDMV



- ① Condenser cooling water pumps in 240MW. power plant, Malaysia. Size:48in(1200mm),Driver:850kW.
- ② Water distributing pumps in water works plant, Hong Kong. Size:32in(800mm),Driver:2500kW.

TORISHIMA TORISHIMA PUMP MFG. CO.,LTD.

Head Office & Works: 1-1-8, Miyata-cho, Takatsuki City, Osaka, Japan.
Phone:072-695-0551 Telefax:072-693-1288

TORISHIMA SINGAPORE
SINGAPORE BRANCH
30 Ubi Crescent #01-02 Ubi Techpark Singapore 408566
Phone:(65)6779-0123 Telefax:(65)6779-6900

TORISHIMA HONG KONG
TORISHIMA (HONG KONG) LIMITED
Unit 603, 6/F., Tower III, Enterprise Square, 9 Sheung Yuet Road, Kowloon Bay, Kowloon, Hong Kong
Phone:(852)2795-1838 Fax:(852)2754-3293

TORISHIMA MALAYSIA
TORISHIMA MALAYSIA SDN.BHD
Suite 1906,19th Floor Kenanga International Jalan Sultan Ismail, 50250 Kuala Lumpur, Malaysia
Phone:(603)2715-0068 Fax:(603)2715-0018

TORISHIMA INDONESIA
P.T. TORISHIMA GUNA INDONESIA
JL Rawa Sumur Timur No.1, Pulogadung Industrial Estate, P.O.Box.:1160 JAT., Jakarta 13930, Indonesia
Phone:(62)21-460-3963,(62)21-460-3964,(62)21-480-0205 Fax:(62)21-460-3937

P.T. TORISHIMA GUNA ENGINEERING
JL Rawa Sumur Timur No.1, Pulogadung Industrial Estate, P.O.Box.:1160 JAT., Jakarta 13930, Indonesia
Phone:(62)21-460-3963,(62)21-460-3964,(62)21-480-0205 Fax:(62)21-460-3937

P.T. GETEKA FOUNINDO
JL Rawa Sumur Timur No.1, Pulogadung Industrial Estate, P.O.Box.:1160 JAT., Jakarta 13930, Indonesia
Phone:(62)21-460-3936,(62)21-460-3937 Fax:(62)21-460-3937

TORISHIMA U.A.E
MIDDLE EAST OFFICE
5th Floor, office No.503, Al Salmeen Golden Tower, P.O.Box.:72197, Electra Street, Abu Dhabi, U.A.E
Phone:(971)2-6743880 Fax:(971)2-6743881

TORISHIMA U.K.
EUROPE OFFICE
20/23 Woodside place Glasgow G3 7QF Scotland United Kingdom
Phone:(44)141-304 4546 Fax:(44)141-332 4927

TORISHIMA U.S.A.
U.S. OFFICE
82B Daniels Road, Charlton, MA01507, United States of America
Phone:(1)866-374-1130 Fax:(1)508-248-9321