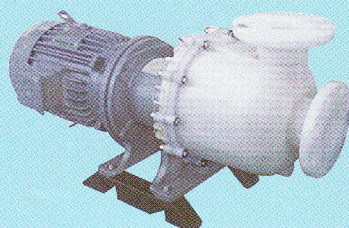
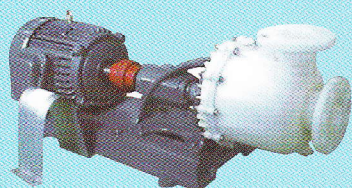




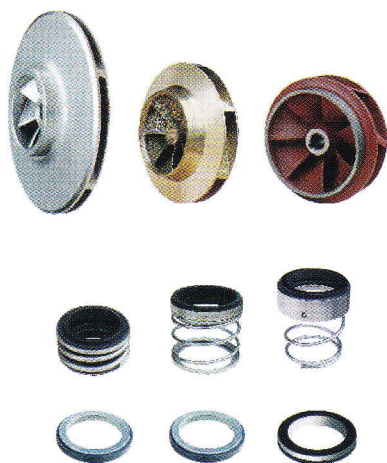
KENJI

www.ptkmcl.com

Centrifugal Pumps



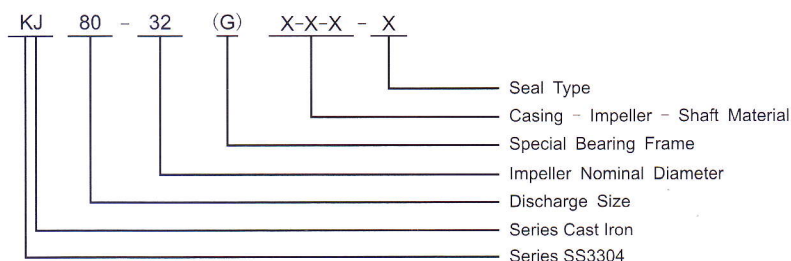
PT. KURNIA MULIA CITRA LESTARI



Description & Features

KENJI KJ series end suction centrifugal pumps are designed complying to BS EN733 / DIN24255 standard. This series of pumps have great advantages in interchangeable parts, high quality and low cost, wide applications in plants, mines, city water supplies, fire-fighting systems, air-condition systems and irrigation.

Model Instruction



Material Code

C: Cast Iron
 Q: Ductile Iron
 B: Bronze
 S: ASTM 420
 45: ASTM 1045
 S304: ASTM 304
 S316: ASTM 316

- Bearing Frame Code
 H: Bearing frame for double-row bearing
 G: Bigger shaft and bearing frame
 Default: Standard
- Seal Type
 M: Mechanical Seal
 P: Gland Packing

Design & Structure

Design	Performance and dimensions referring to the European standard BS EN733 / DIN24255
Structure	Horizontal, Axial End-Suction, Single-Stage, Single-Suction, Volute Casing, Back pull-out
DN (mm)	32 - 300
Flange	ISO7005.2 DIN2501 PN16 GB / T17241.6 PN1.6

Material

Part	Standard Material	Options on request
Casing	Cast Iron	Ductile Iron / ASTM304 / ASTM316
Impeller	Bronze	Cast Iron / ASTM304 / ASTM316
Shaft	ASTM420	ASTM304 / ASTM316 / ASTM1045
Shaft Seal	Mechanical Seal	Gland Packing

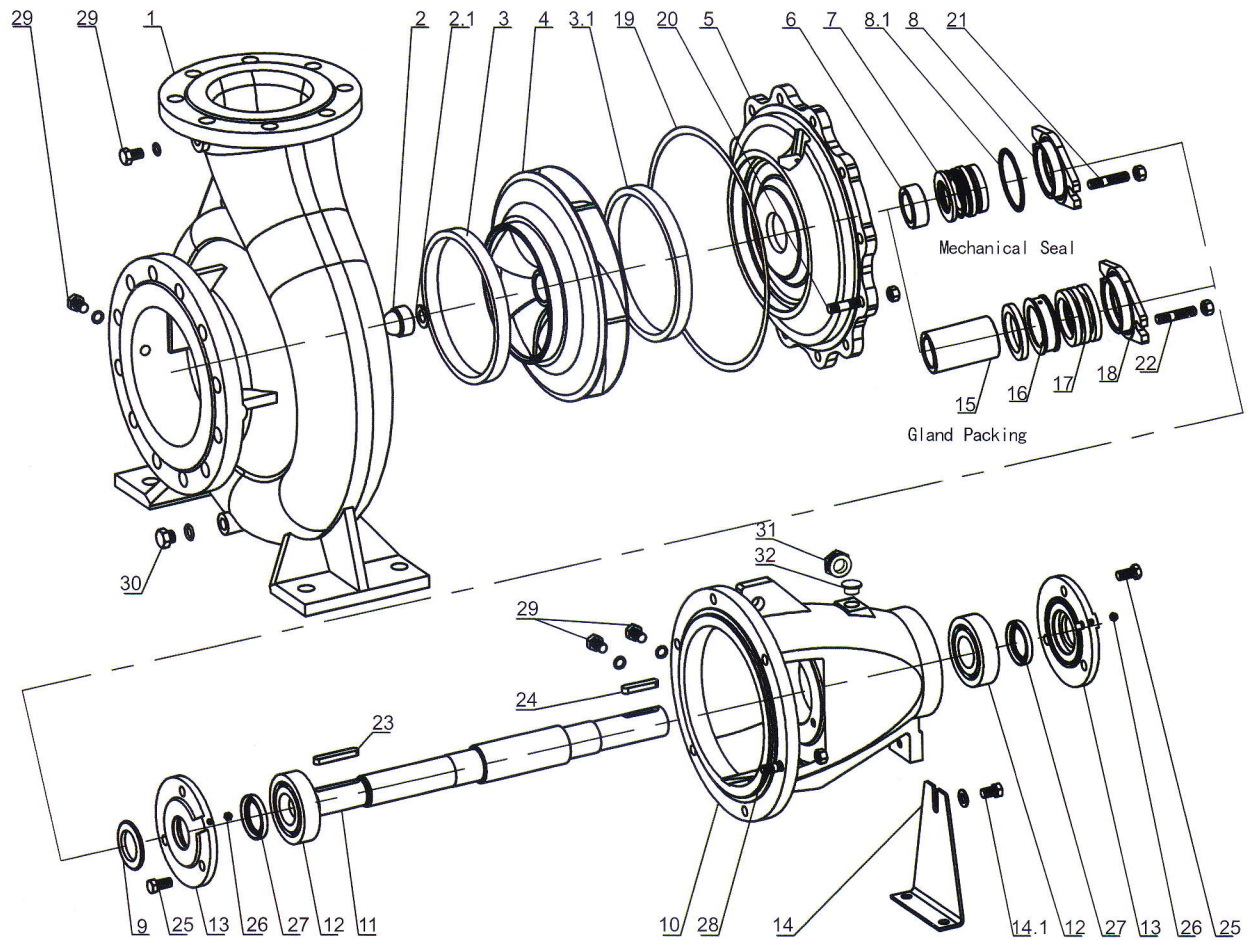
Applications

- Heating, Ventilation and Air-Conditioning
- Fire Protection and Fire Fighting
- Water Circulation
- Liquid Transfer
- Irrigation
- Cooling
- Plants
- Mines

Operating Data

Flow Rate(Q)	0.5-440 l/s
Head(H)	2-152 m
Speed	1450 or 2900 rpm (50Hz) / 1750 or 3500 rpm (60Hz)
Max Temperature	105°C
Working Pressure	1.0 MPa standard; 1.6 MPa on request
Conveying Medium	Clean water or liquids similar to clean water in physical property

◎ KJ Series Explode View & List of Parts

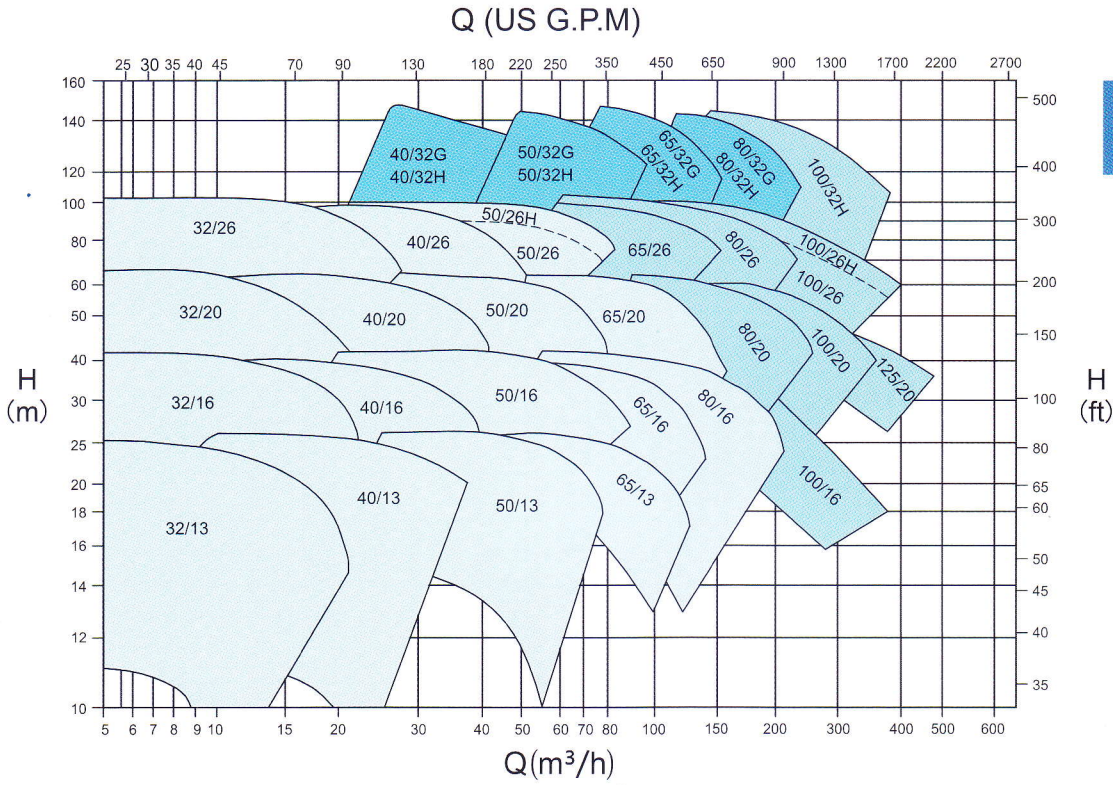


Code	Part Name
1	Casing
2	Impeller Nut
2.1	Lock Washer
3	Wear Ring (Front)
3.1	Wear Ring (Back)
4	Impeller
5	Casing Cover
6	Shaft Spacer
7	Mech. Seal
8	Seal Cover
8.1	O-ring
9	Rubber Slinger
10	Bearing Frame

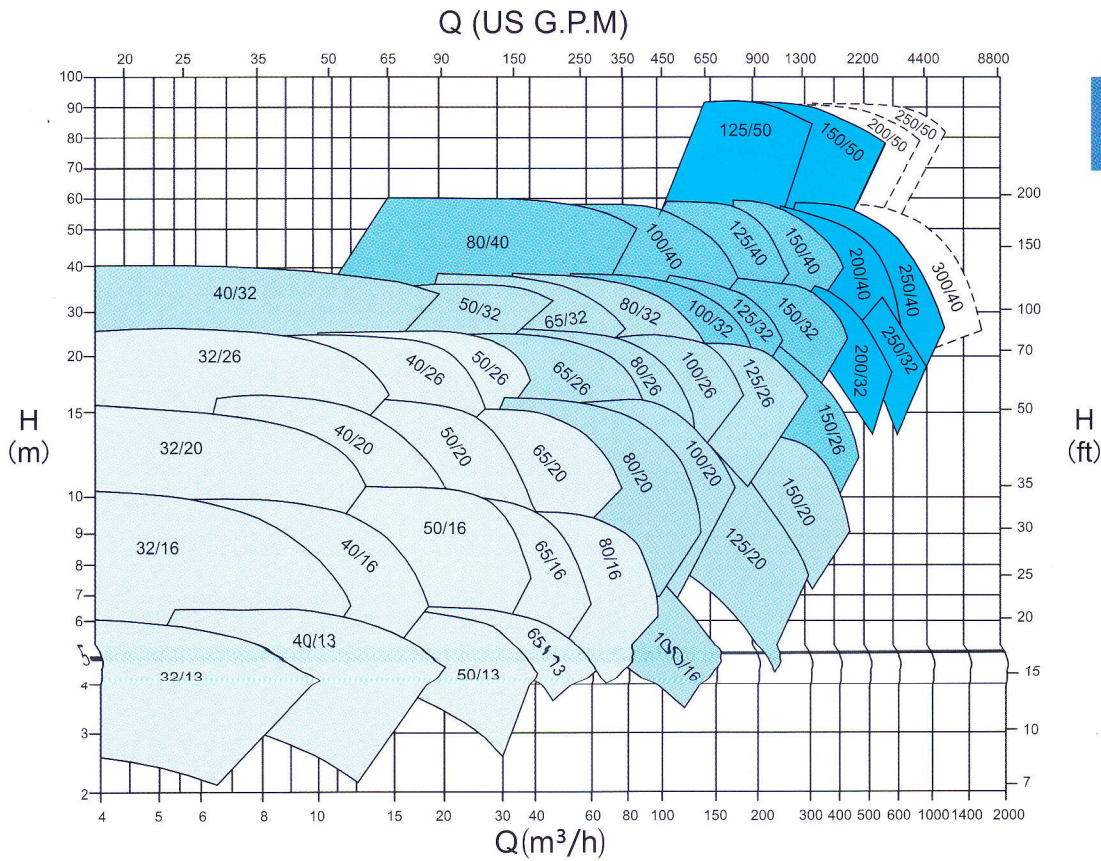
Code	Part Name
11	Shaft
12	Bearing
13	Bearing Cover
14	Support Foot
14.1	Bolt & Nut
15	Packing Sleeve
16	Packing Seal Cage
	Locating Sleeve
17	Gland Packing
18	Gland Cover
19	Casing Gasket
20	Stud & Nut
21	Stud & Nut

Code	Part Name
22	Stud & Nut
23	Key
24	Key
25	Screw Bolt
26	Oil Nipple
27	Felting
	Oil Seal
28	Stud & Nut
29	Plug & Washer
30	Plug & Washer
31	Oil Scale
32	Oil Cover

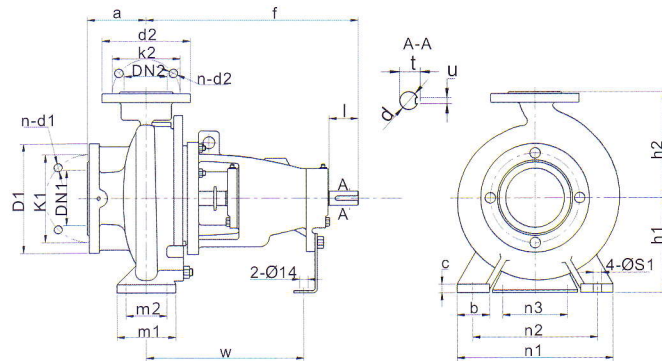
Field Chart KJ series (50Hz)



2900rpm



1450rpm



© KJ Installation Dimensions

NO	Model	Bearing		DN1	DN2	a	f	h1	h2	b	c	n3	m1	m2	n1	n2	S1	w	d	l	t	u																											
		Inside Dimension																																															
1	KJ 32/13	25	32	50	80	360	112	140	50	65	14	100	100	70	190	140	14	267	24	50	27	8																											
2	KJ 32/16																						132	160	240	190																							
3	KJ 32/20																						160	180	320	250																							
4	KJ 32/26																						180	225	210	160																							
5	KJ 40/13																						112	140	240	190																							
6	KJ 40/16																						132	160	265	212																							
7	KJ 40/20																						160	180	320	250																							
8	KJ 40/26																						180	225																									
9	KJ 40/32																						200	250																									
10	KJ 40/32H																						200	250																									
11	KJ 40/32G	526	200																																														
12	KJ 50/13	25	50	65	100	360	132	160	50	65	18	100	100	70	240	190	14	267	24	50	27	8																											
13	KJ 50/16																						160	180	265	212																							
14	KJ 50/20																						160	200	320	250																							
15	KJ 50/26																						180	225																									
16	KJ 50/26G																						470	225	345	280																							
17	KJ 50/32																						470	225	345	280																							
18	KJ 50/32H																						526	200																									
19	KJ 50/32G																						526	200																									
20	KJ 65/13																						25	65	80	100	360	160	180	65	14	18	125	95	280	212	18	367	42	110	45	12							
21	KJ 65/16																																										200	200	345	280			
22	KJ 65/20	465	180	225	320	250	339																																										
23	KJ 65/20G	470	225	360	280																																												
24	KJ 65/26	470	225	360	280																																												
25	KJ 65/32	526	225	400	315																																												
26	KJ 65/32H	526	225	367	42	110	45	12																																									
27	KJ 65/32G	526	225	367	42	110	45	12																																									
28	KJ 80/16	35	80	100	125	360	180	225	65	14	15	125	95	345	280	14	267	24	50	27	8																												
29	KJ 80/20																					470																					200	280	342	32	80	35	10
30	KJ 80/26																					470	200	280	342	32	80	35	10																				
31	KJ 80/32																					470	250	315	342	32	80	35	10																				
32	KJ 80/32H																					526	250	315	367	42	110	45	12																				
33	KJ 80/32G																					526	250	315	367	42	110	45	12																				
34	KJ 80/40																					530	280	355	370	42	110	45	12																				
35	KJ 100/16																					35	100	125	140	470	200	250	80	15	16	160	120	360	280	18	342	32	80	35	10								
36	KJ 100/20																																									470	225	280	342	32	80	35	10
37	KJ 100/26																																									470	250	315	342	32	80	35	10
38	KJ 100/32	526	250	315	367	42	110	45	12																																								
39	KJ 100/40	530	280	355	370	42	110	45	12																																								
40	KJ 125/20	35	125	150	140	470	250	315	80	16	16	160	120	400	315	18	342	32	80	35	10																												
41	KJ 125/26																																									470	250	315	342	32	80	35	10
42	KJ 125/32																																									530	280	355	370	42	110	45	12
43	KJ 125/40																																									530	315	400	370	42	110	45	12
44	KJ 125/50																																									670	355	450	500	48	110	51	14
45	KJ 150/20																					500	280	400	342	32	80	35	10																				
46	KJ 150/26																					500	250	355	342	32	80	35	10																				
47	KJ 150/32																					530	280	400	370	42	110	45	12																				
48	KJ 150/40																					530	315	450	370	42	110	45	12																				
49	KJ 150/50																					670	375	500	500	48	110	51	14																				
50	KJ 200/26	55	200	250	180	555	315	450	100	18	20	200	150	450	350	23	392	42	110	51	14																												
51	KJ 200/32																					555	315	450	392	42	110	51	14																				
52	KJ 200/40																					670	335	480	505	48	110	51	14																				
53	KJ 200/50																					720	425	560	505	48	110	51	14																				
54	KJ 250/32																					55	250	300	220	691	355	520	150	26	110	250	200	660	510	28	525	48	110	51	14								
55	KJ 250/40																																									682	400	560	525	48	110	51	14
56	KJ 250/50																																									720	450	670	516	48	110	51	14
57	KJ 300/40																																									720	425	670	516	48	110	51	14